



DX Access Remote
User's Guide



Acknowledgement

This database software has been developed with the cooperation of the UN system. The product has been adapted from UNICEF ChildInfo technology.

Contents

- Introduction 4**
 - Content overview 4*

- C H A P T E R 1: Getting Started..... 5**
 - System requirements 5*
 - Starting the DX Access Remote Data Exchange application..... 6*

- C H A P T E R 2: Using the DX Access Remote Data Exchange Application.... 7**
 - Uploading a database 7*
 - Creating a remote Microsoft SQL server connection 10*
 - Downloading a database..... **Error! Bookmark not defined.***
 - Viewing DX Access Remote data in the DevInfo 6.0 User Application 19*

INTRODUCTION

The **DX Access Remote** data exchange application enables you to perform the following database operations:

- Upload a DevInfo database in Microsoft Access format to a DevInfo database in Microsoft SQL Server, Oracle or MySQL format
- Download a DevInfo database in Microsoft SQL Server, Oracle or MySQL format to a DevInfo database in Microsoft Access format

Note: Multiple database uploads



More than one DevInfo database can be uploaded at a time in MS-Access format to a single DevInfo database in MS SQL Server format.

This application also enables you to upload more than one database within a single database so that the webmaster of the DevInfo 6.0 Web application only needs to create a single database. Thus, you can cut/reduce any additional costs required to host multiple databases by including the multiple databases within a single database.

Content Overview

This guide contains two chapters:

Chapter 1, “**Getting Started**”, outlines the system requirements, installation and starting procedures, and the user interface of this data exchange application.

Chapter 2, “**Using the DX Access Remote Data Exchange Application**”, describes the steps that enable you to use this data exchange application.

CHAPTER 1

Getting Started

This chapter explains the system requirements needed to run the application as well as how to launch it.

System requirements

The recommended minimum hardware requirements to install and run the DevInfo 6.0 application are as follows:

- Pentium IV
- 512 MB of RAM
- 1 GB of free hard disk space
- Display resolution 1024 x 768
- Microsoft Windows XP or above
- Microsoft Internet Explorer
- Microsoft Office XP is recommended but not required



Starting the DX Access Remote application

Follow the steps given below to start this data exchange application:

- Launch the **DevInfo 6.0 Database Administration** application.
- To start, click **DX Access Remote.exe** under the **Data Exchange** Module (Fig. 1.1).

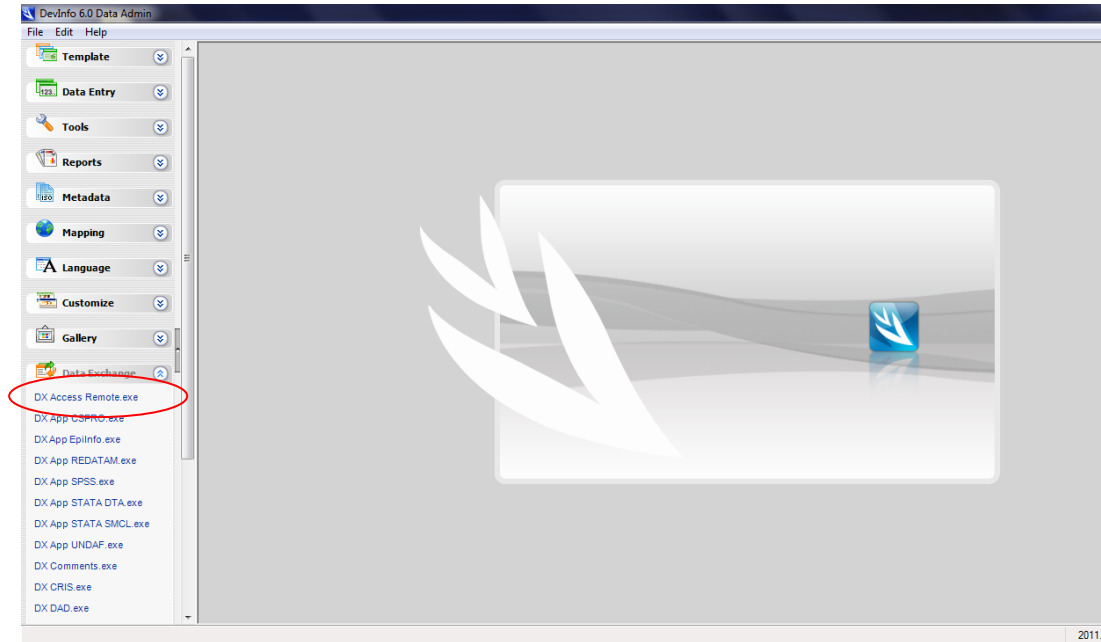


Fig. 1.1 – DevInfo 6.0 Data Admin - User Interface

CHAPTER 2

Using the DX Access Remote Data Exchange Application

This chapter explains how to use the DX Access Remote data exchange application to upload and download databases.

Uploading a database

This section describes the steps that enable you to upload a database from a Microsoft Access database to a remote Microsoft SQL database. When you click **DX Access Remote.exe** under the **Data Exchange** module, the following steps appear in the sequence shown below.

Step 1 – Select Transfer Option

In step 1, select the **Upload Dataset** option (Fig. 2.1).

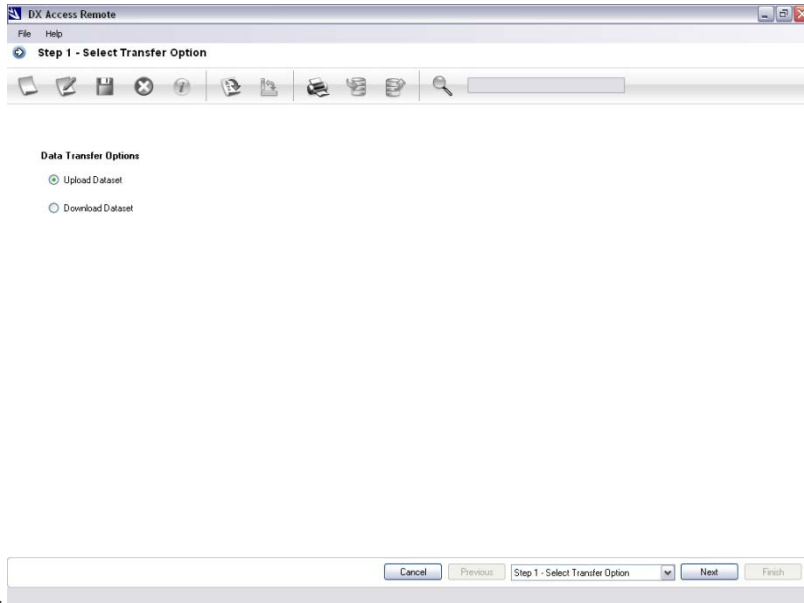


Fig. 2.1 – DX Access Remote – Step 1 – Select Transfer Option

Click **Next** to continue to step 2.

Step 2 – Select Source Database

In step 2, select the source database to upload (Fig. 2.2).

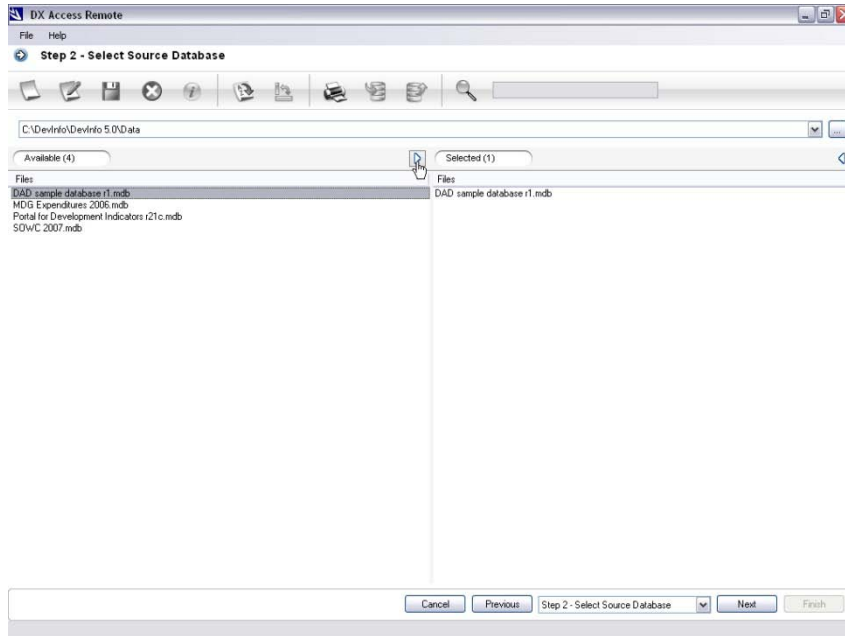


Fig. 2.2 – DX Access Remote – Step 2 – Select Source Database

Click  **Browse** to specify a folder containing DevInfo 6.0 databases.

Select the required database by either double-clicking on the database or by dragging the database from the **Available** Pane to the **Selected** Pane.

Note: Database validation



The system checks and verifies the specified source database. If it is not a valid database, the system notifies the user accordingly

Click **Next** to continue to step 3.

Step 3 – Select Destination Database

In step 3, the destination database is specified (Fig. 2.3).

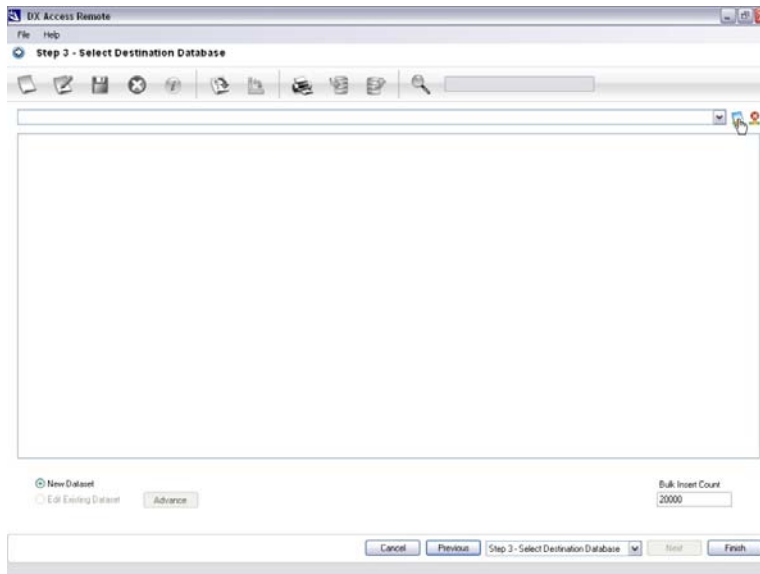



Fig. 2.3 – DX Access Remote – Step 3 – Select Destination Database

Creating a remote Microsoft SQL Server connection

Click  to create a new online MS SQL database connection. The **New Connection** dialog box appears as shown below (Fig. 2.4).

The image shows a 'New Connection' dialog box with the following fields and controls:

- Connection Details**
 - Type:** A dropdown menu currently showing 'Microsoft SQL Server'.
 - Connection Name:** An empty text input field.
 - Server Name:** An empty text input field.
 - Database Name:** An empty text input field.
 - User Name:** An empty text input field.
 - Password:** An empty text input field.
- Buttons:** 'Test', 'Save', and 'Cancel' are located at the bottom right of the dialog.

Fig. 2.4 – DX Access Remote – New Connection dialog box

Contact the System Administrator if necessary, to request connection details for the following:

- **Connection Name** – A user-defined name to identify the connection
- **Server Name** – The name of the computer on which the MS SQL Server application is installed
- **Database Name** – An empty MS SQL Server database created by the MS SQL Server database administrator
- **User Name and Password** – Account details to access the MS SQL Server database

Note: Connection test



Ensure that before saving the connection details, you have clicked the **Test** button to test the connection.

Uploading the source MS Access database completely

The source MS Access database can be uploaded completely. To do so, select **New Dataset** and click **Finish**, as shown below (Fig. 2.5).

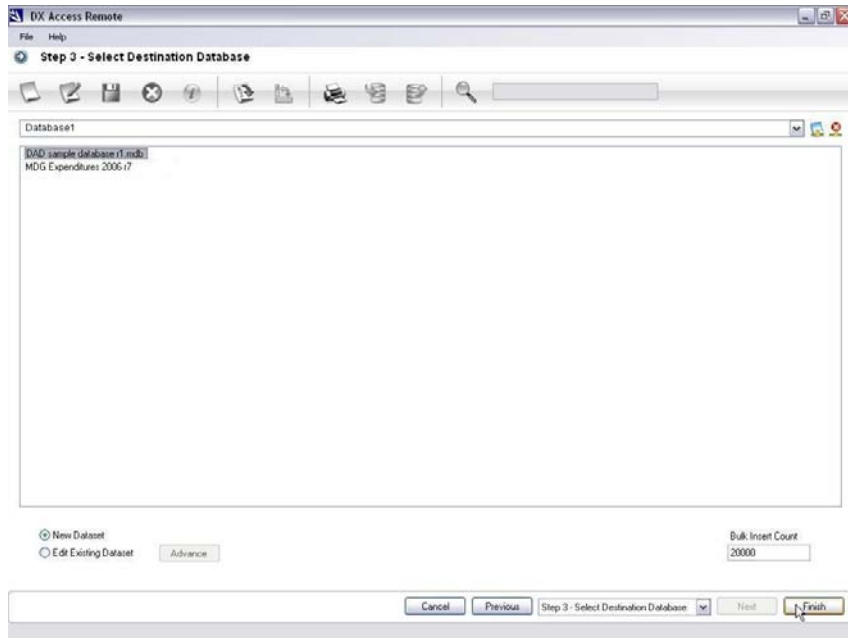


Fig. 2.5 – DX Access Remote – Step 3 – Finish button

The source MS Access database is uploaded to the remotely hosted MS SQL database and a confirmation that the conversion is complete appears, as shown below (Fig. 2.6).

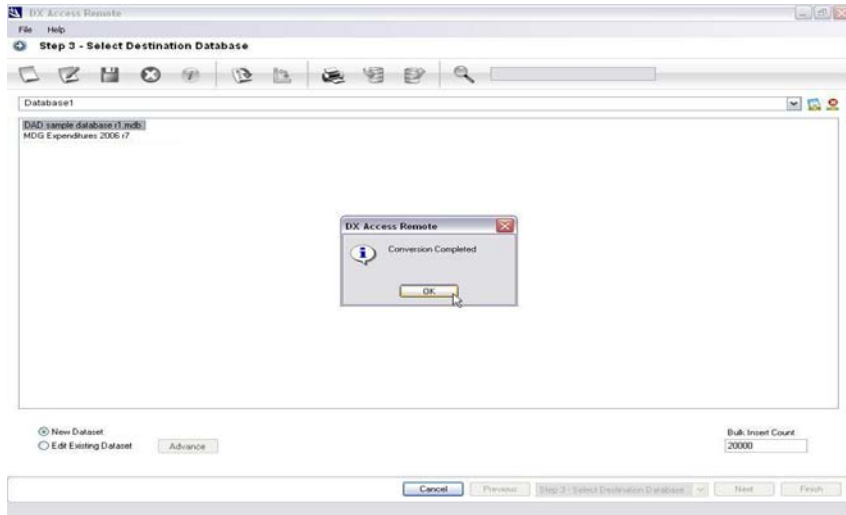


Fig. 2.6 – DX Access Remote – “Conversion Completed” message

Uploading the source MS Access database selectively

The source MS Access database can also be uploaded selectively. To do so, select the **Edit Existing Dataset** option. Then, click the **Advance** button. The **Advance** dialog box appears as shown below (Fig. 2.7).

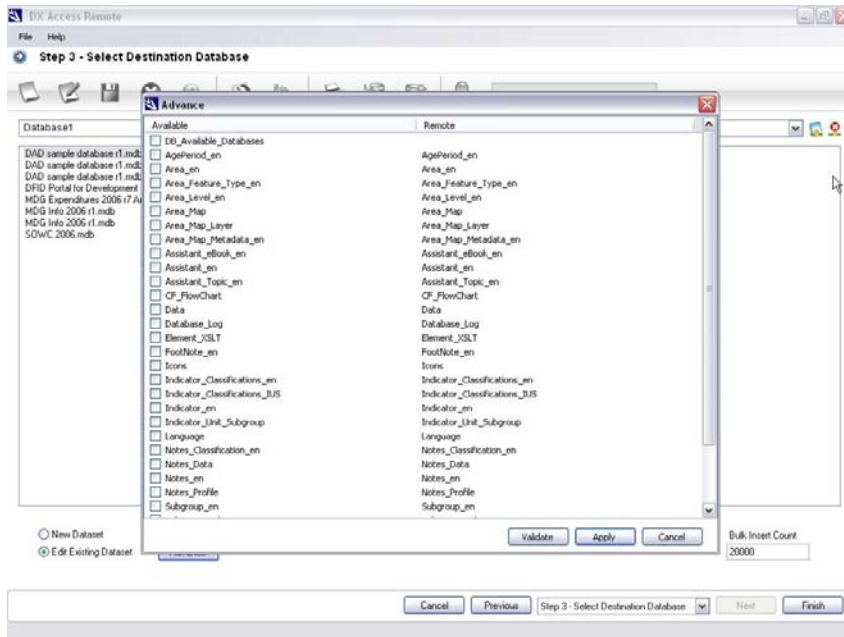


Fig. 2.7 – DX Access Remote – Advance dialog box

The changed MS Access database can either be validated with the existing MS SQL database on the remote server, or the required tables can be selected to upload.

Click **Apply** to upload the selected tables to the MS SQL database hosted remotely. The selected tables will be uploaded to the destination database.

Click **Finish** to close the DX Access Remote data exchange application.

Downloading a database

This section describes the steps to download a database from a remote Microsoft SQL database to a Microsoft Access database. Click **DX Access Remote.exe** under the **Data Exchange** module to begin.

Step 1 – Select Transfer Option

In step 1, select the **Download Dataset** option under **Data Transfer Options** (Fig. 2.8).

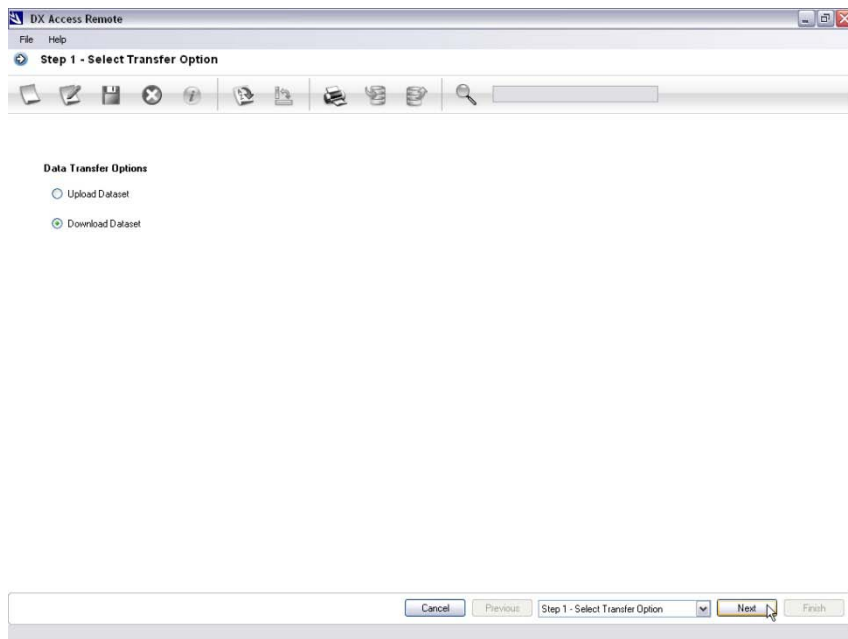


Fig. 2.8 – DX Access Remote – Step 1 – Select Transfer Option

Click **Next** to continue to step 2.

Step 2 – Select Source Database

In step 2, select the source database (Fig. 2.9).

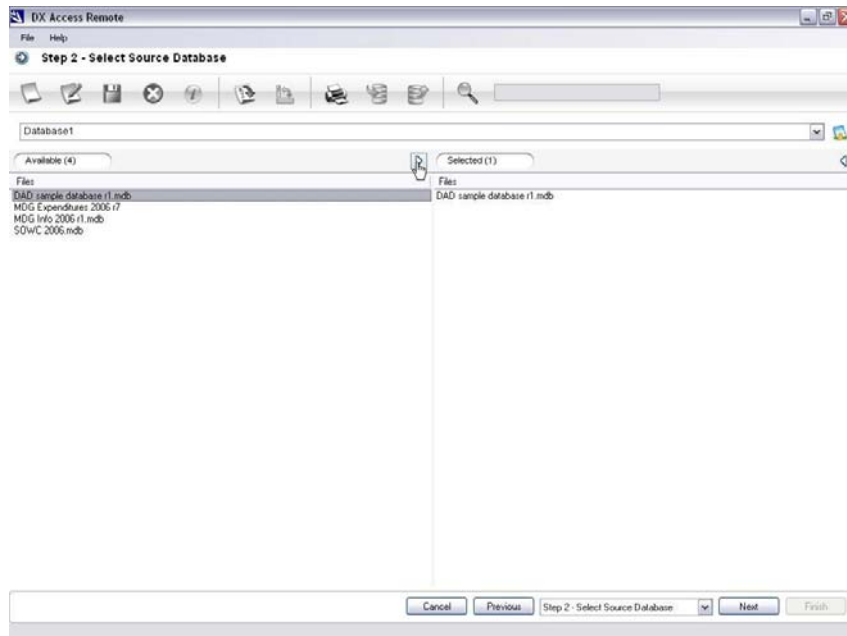


Fig. 2.9 – DX Access Remote – Step 2 – Select Source Database

Click  **Browse** to specify a folder containing DevInfo 6.0 databases.

Select the required database by either double-clicking on the database or by dragging the database from the **Available** pane to the **Selected** pane.

Note: Database validation



The system checks and verifies the specified source database. If it is not a valid database, the system notifies the user accordingly.

Click **Next** to continue to step 3.

Step 3 – Select Destination Database

In step 3, the destination database is specified (Fig. 2.10).

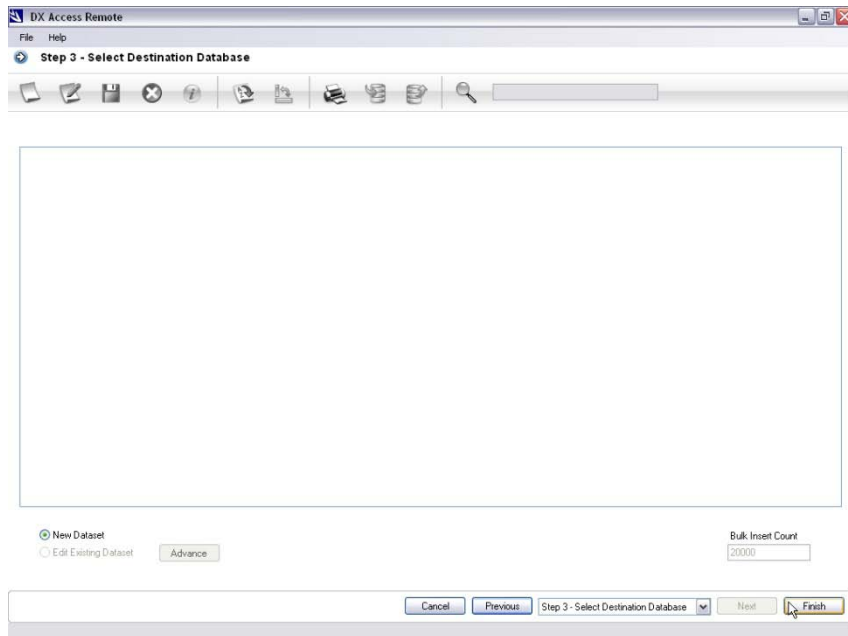


Fig. 2.10 – DX Access Remote – Step 3 – Select Destination Database

The selected database is downloaded as an independent MS SQL based DevInfo 6.0 database and a confirmation that the conversion is complete appears, as shown below (Fig. 2.11).

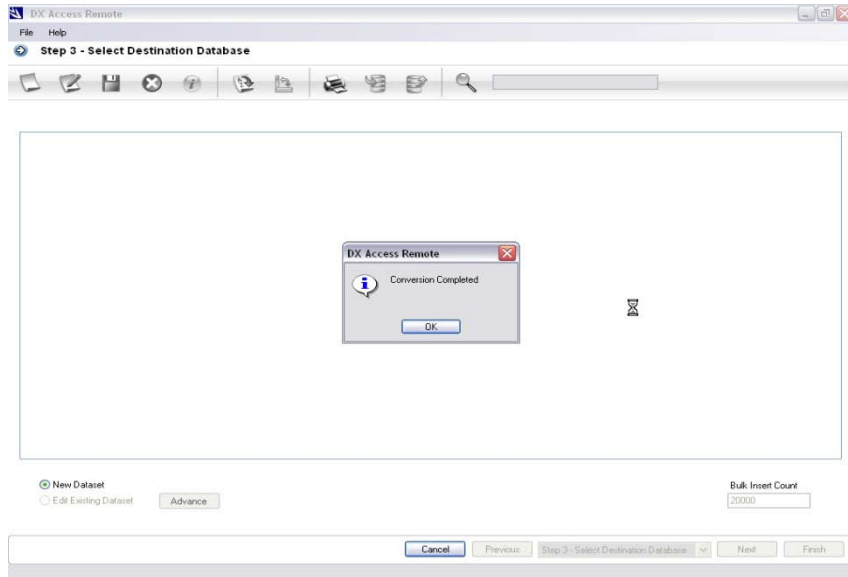


Fig. 2.11 – DX Access Remote – “Conversion Completed” message

Upon clicking **OK** within the **Conversion Completed** message box, the **Save As** dialog box appears, as shown below (Fig. 2.12).

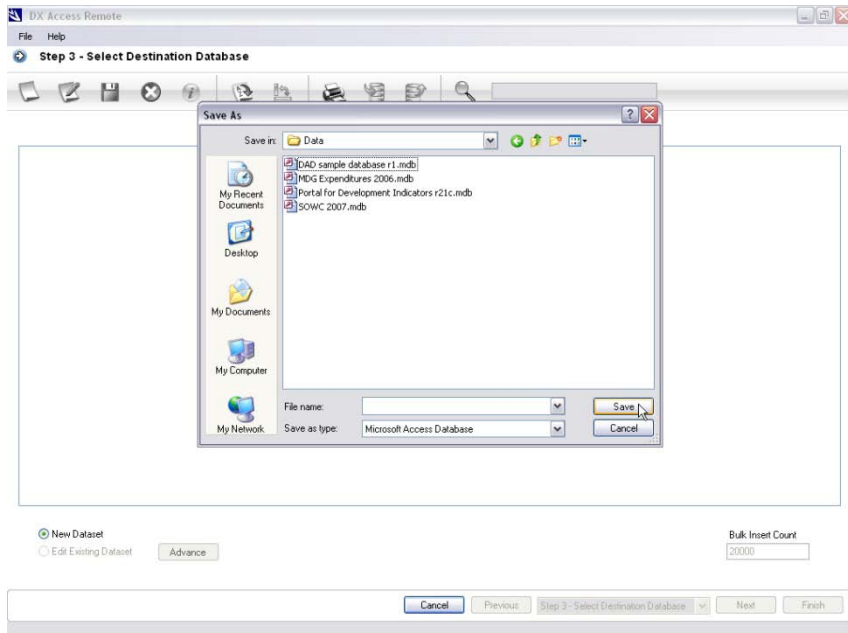


Fig. 2.12 – DX Access Remote – Save As dialog box

The **Save As** dialog box can be used to specify the name and location of the MS Access database to be saved (which was downloaded in the previous step). The **DX Access Remote.exe** data exchange utility is automatically closed after saving the downloaded database at a specific location.

Viewing uploaded online databases in DevInfo 6.0 User Application

To view the newly uploaded database, first launch the **DevInfo 6.0 User** application on your computer. Then click the **Database** box at upper left to open the database selection dialog box (Fig. 2.13).

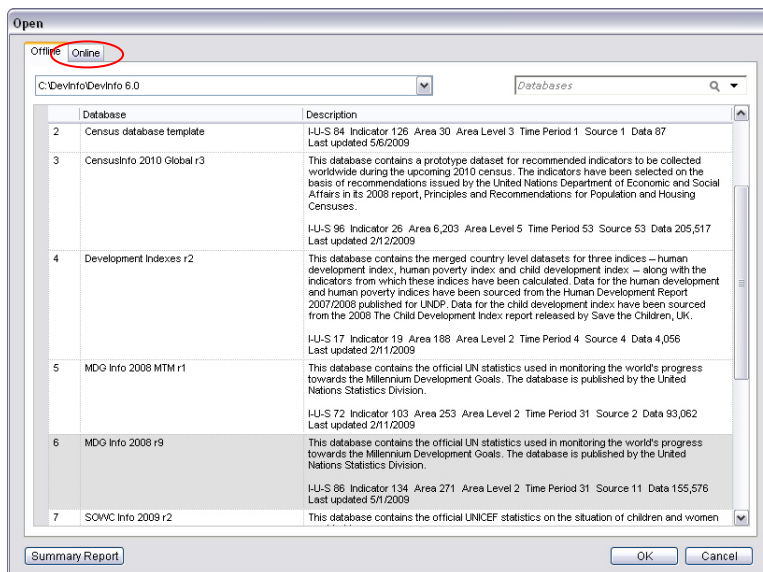



Fig. 2.13 – DX Access Remote – Selecting an Online database

From the **Open** dialog box, switch to the **Online** tab and select the desired database.

To connect to an online database not listed, click  **New Connection** to open the **New Connection** dialog box. Provide the requested information and click **Test** to authenticate the

user name and password on the specified server. The system will return a **Connection successful** message after authentication. Click **Save** to save the connection for future use.